



# ZX-500F

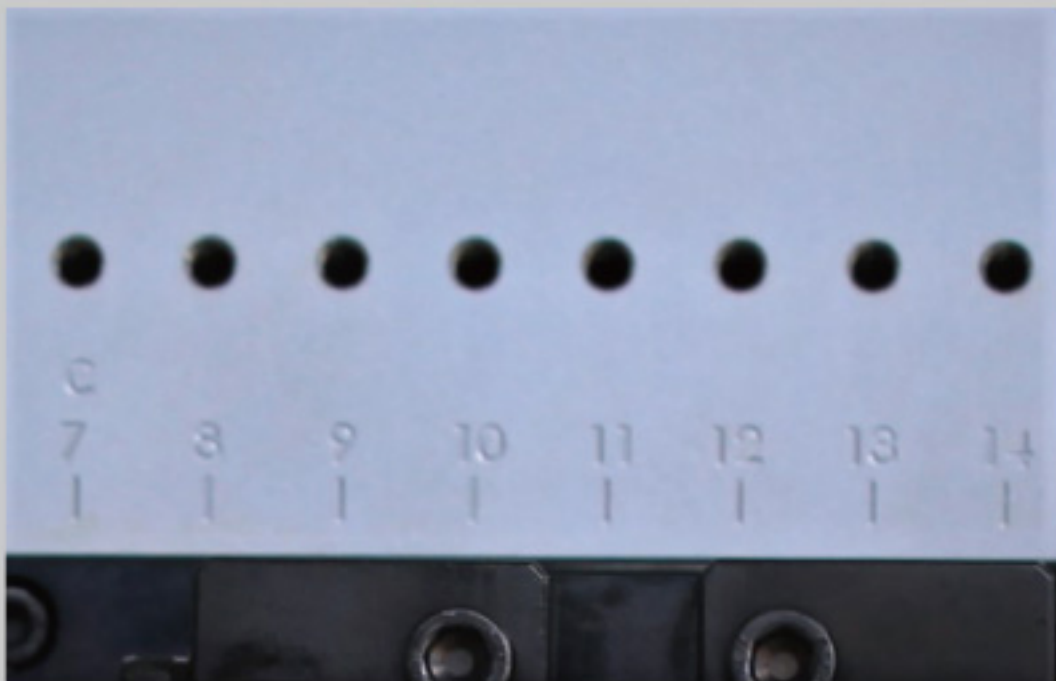
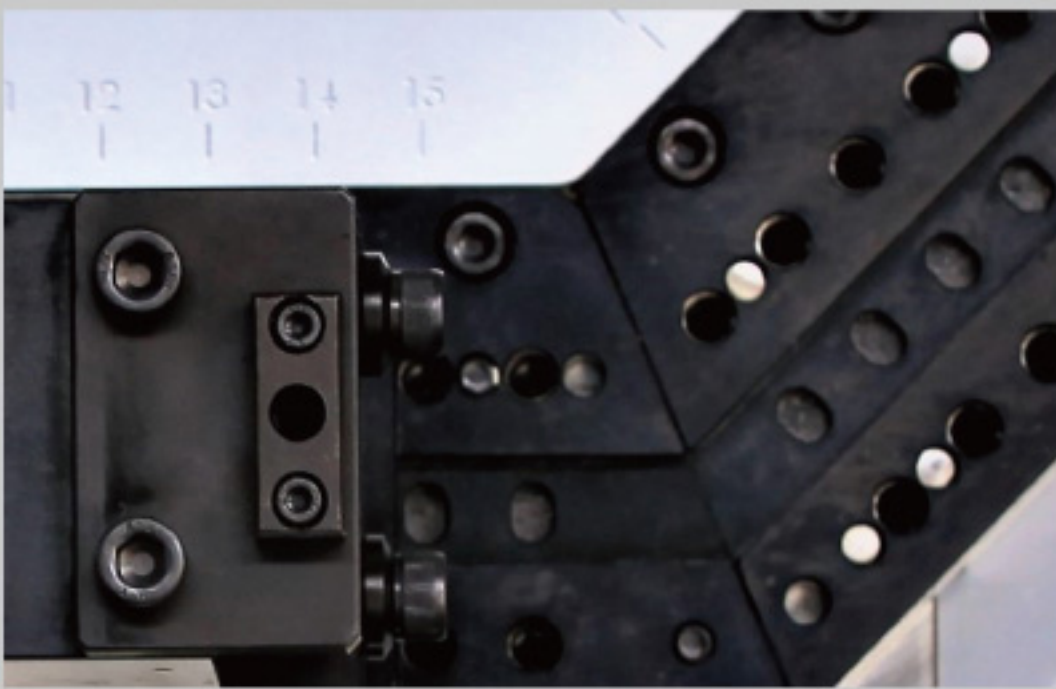
Unique Solution Tailored to the Demands of  
Wire Forming Industry



# ZX-500F

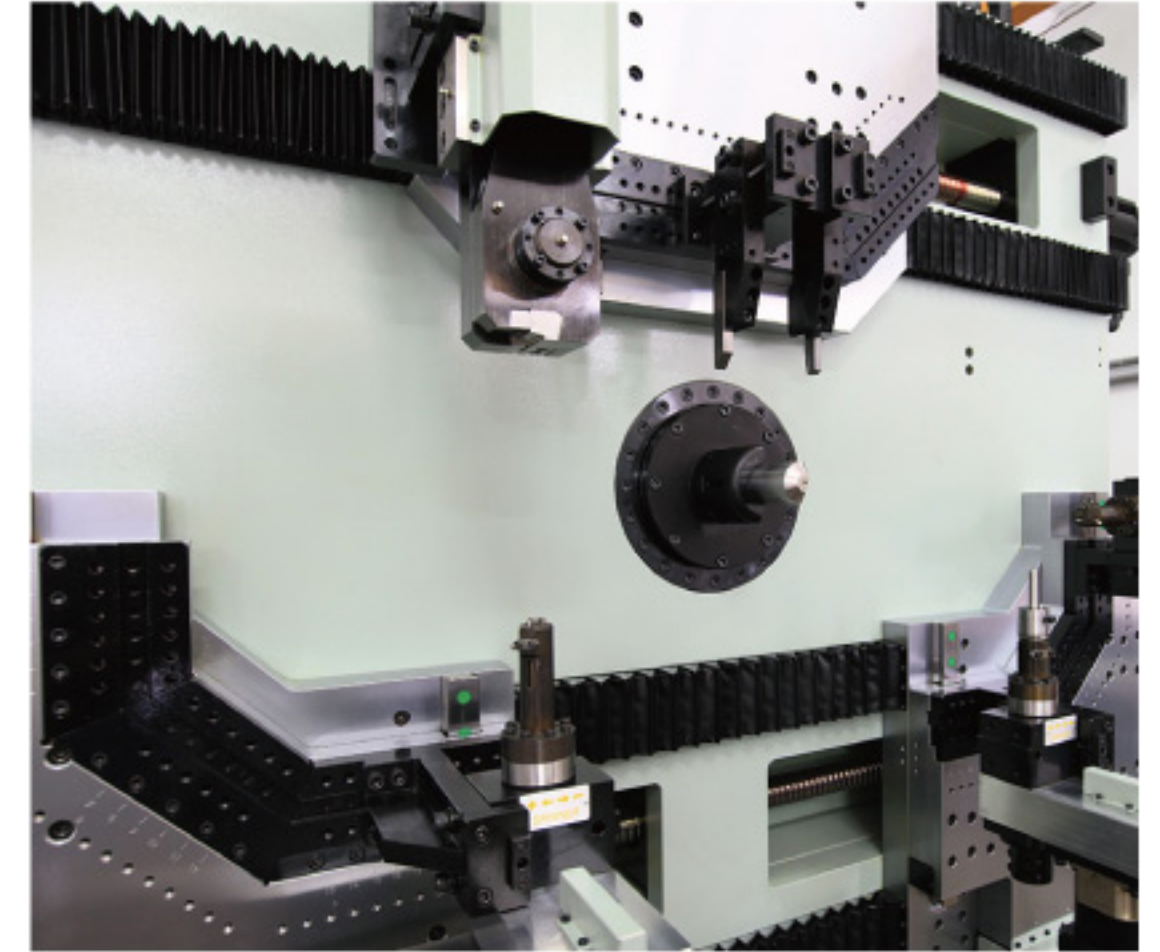
## Setup Time is Significantly Reduced

Thanks to the innovative machine design with full consideration of set up preparation. All the tables and tool holders have measuring scale that allow to minimize the set up time and easy to achieve repeatability of positioning for the previous setting.



## New Definition of Great Flexibility

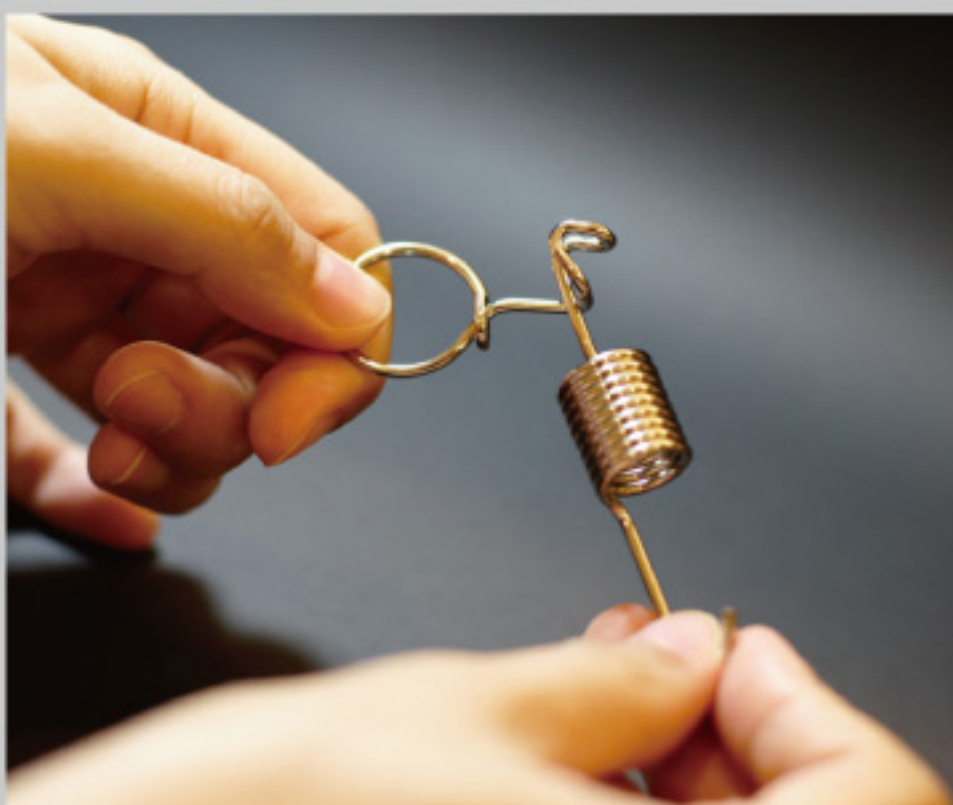
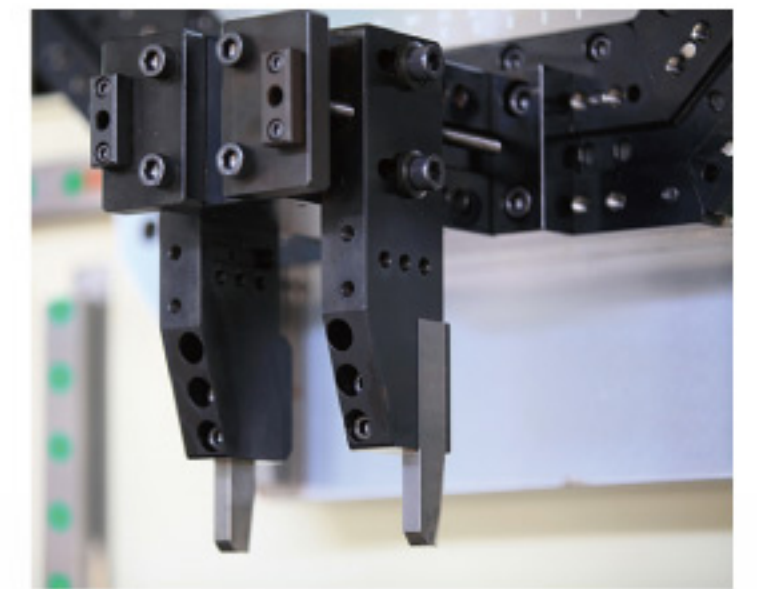
The ZX-500F has 3 compound tables enables eccentric working without additional tooling requirements. Also, it creates a bigger work zone and provide more flexibility. Thanks to the concept of Triple Compound Table (**TCT**) system. It minimized the tooling cost and created an easier and simple way to cope with more complex products.



## Efficient Productivity and Modular Production Line

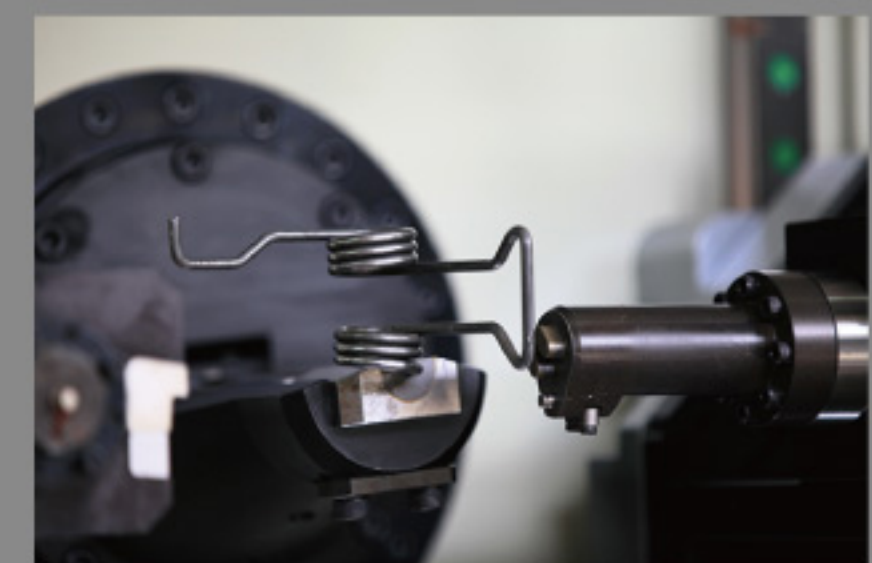
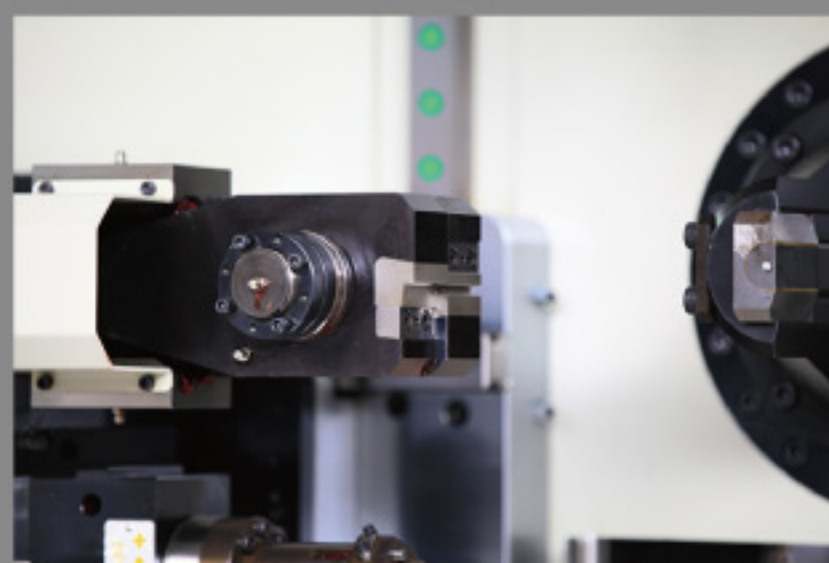
Reduction of set up time and tooling cost, stable and high speed output assure the possibility of success business.

Based on the extraordinary structure of machine design allows highly complex bending procedures can be carried out. Triple Compound Table (**TCT**) can provide better processing speed and the measuring scale brings the convenience of tool positioning repeatability and ease of tool management. ZX-500F is one of the unique solutions tailored to the demands of wire forming industry.

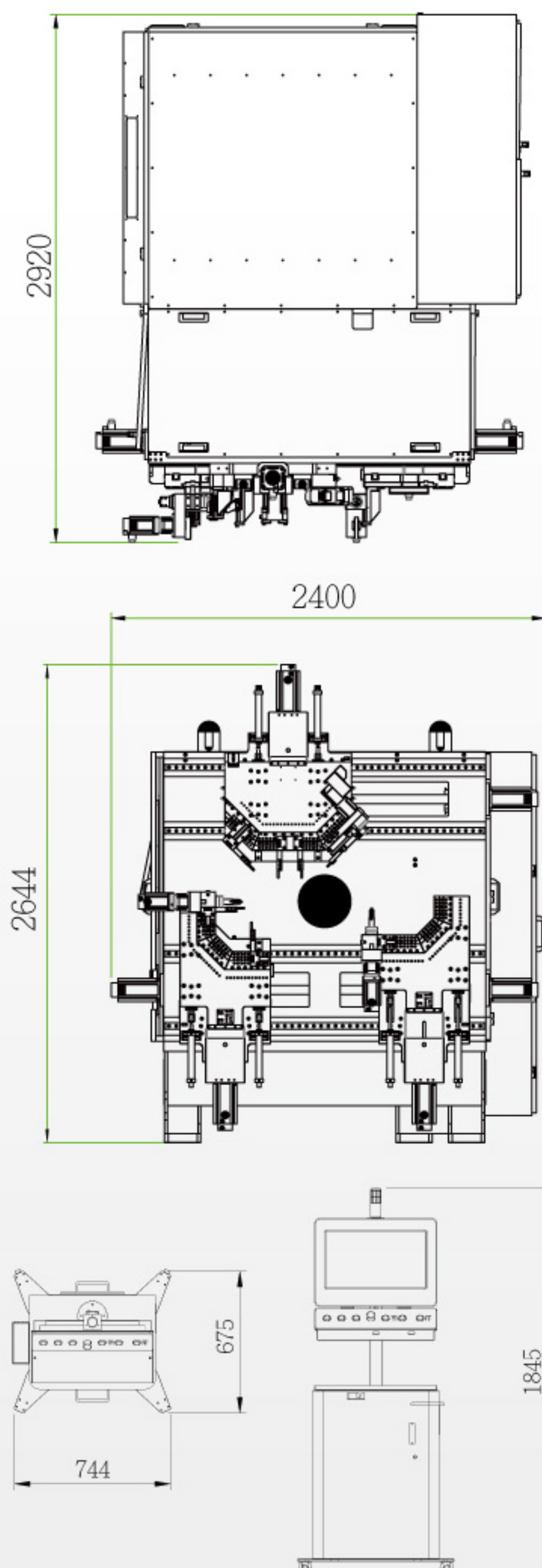


## Versatile, Powerful and Reliable

The ZX-500F has 11 axes in standard. Total 6 axes situated on the 3 individual compound tables which control X and Y movement, 1 axis for wire feed, 1 axis for rotary wire, 1 axis for rotary quill and 2 servo spinners ensure the flexibility. The bigger work zone comply ergonomics and comfort in service of performance and reduction of work space limit. Thanks to the concept of this newly design allows operator's idea can be easily carried out.







## ZX-500F SPECIFICATION

### Capability

Material Range	mm	Wire $\Phi$ 2.0-5.0 / Strip T2x18
Max. O.D.	mm	200
Max. Bending Return Length	mm	190

### Power Supply & Dimension

Power Supply		220V(*380V/415V/480V) 3P 50/60Hz Max. 75kw
Machine Dimension (LxWxH)	mm	2920x 2400x 2644
Weight	Kg	9000

### Axis

Standard	11 axes (*B&R-Max. 25 axes/SOL-Max. 16 axes)
----------	--

### X1 Table x 1

Max. Travel	900 mm
Min. Increment	0.01 mm

### Y1 Table x 1

Max. Travel	200 mm
Min. Increment	0.01 mm

### X2/X3 Table x 2

Max. Travel	470 mm
Min. Increment	0.01 mm

### Y2/Y3 Table x 2

Max. Travel	200 mm
Min. Increment	0.01 mm

### Feed x 1

Min. Increment	0.01 mm
Max. Increment	99999.99 mm
Max. Feed Speed	106m / min

### Rotary Wire x 1

Min. Increment	0.1°
Max. Rotating Angle	Wire: 360° / Strip: $\pm$ 90°

### Rotary Quill x 1

Min. Increment	0.1°
Max. Increment	9999°

### Spinner x 2

Min. Increment	0.1°
Max. Increment	9999°

\* Option

# Contact

PLUSPRINGS MACHINERY CO., LTD.  
No.21, Ln. 15, Touqian Rd., Xinzhuang Dist.,  
New Taipei City 24252, Taiwan (R.O.C.)  
Tel: +886 (0)2 2277 8595  
Fax: +886 (0)2 2277 7928  
E-Mail: [info@plusprings.com](mailto:info@plusprings.com)

Beyond Today