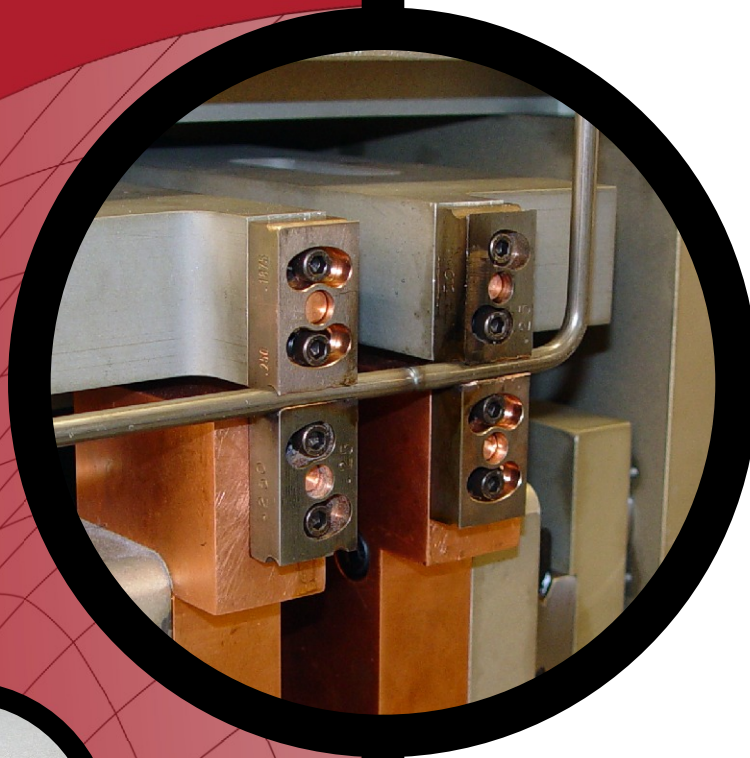


# ACCUWELD

AWE-8, AWE-8i  
AWE-12, AWE-12i

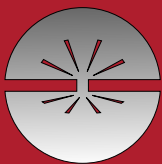
**Automatic Butt Welding Module  
for AFM-3Dx & AFE-xDx machines**

## E-SERIES



Available in AC or Inverter Technologies for 8 or 12 mm Capacity

Automatic part transfer and Argon Gas Options Available



# MODULAR



# ACCUWELD Automatic Butt Welding Module

**AWE-8**  
**AWE-8i**  
**AWE-12**  
**AWE-12i**

AccuWeld Butt Welding Modules

| Model  | Power   | Wire Range | Size            | Electrical | Weight  | Notes              |
|--------|---------|------------|-----------------|------------|---------|--------------------|
| AWE8i  | 40 KVA  | 2-8 mm     | 24" X 48" X 68" | 460V, 2ph* | 650 lbs | Inverter, 2D or 3D |
| AWE12i | 100 KVA | 2-12 mm    | 24" X 48" X 68" | 460V, 2ph* | 740 lbs | Inverter, 2D or 3D |
| AWE8   | 60 KVA  | 2-8 mm     | 24" X 48" X 68" | 460V, 3ph* | 790 lbs | AC, 2D or 3D       |
| AWE12  | 150 KVA | 2-12 mm    | 24" X 48" X 68" | 460V, 3ph* | 930 lbs | AC, 2D or 3D       |

\*for 380V/400V add -E to the model number

## FEATURES

Controlled by AIM Inc's SmartEditor™ Software  
 Fully automatic welding control  
 Welding schedules saved along with part files  
 Heavy duty/high precision guides provide accurate and repeatable alignment  
 Pivoting weld head  
 Adjustable clamp & tip force

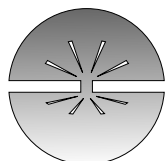
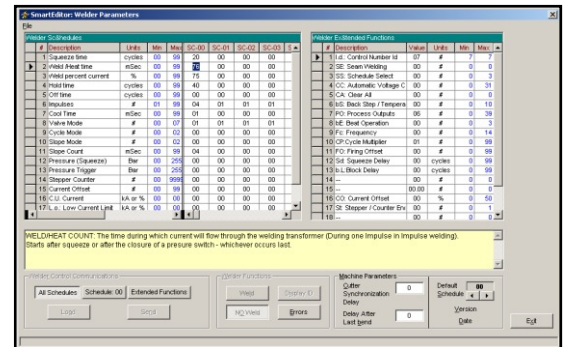
## OPTIONS

AG1: Argon gas port (gas container customer supplied)  
 ATE1: Frame transport unit  
 I/O Requirements: AccuForm machine supplied (AFM-3Dx or AFE xDx)  
 Consumables: weld inserts (Elkonite® material)

## BENEFITS

Welding Integration to complete rings and frames  
 Reduce production costs by eliminating additional parts handling  
 Consistent part quality

Available on AFM modular & AFE machine systems



AIM, Inc.  
 502 S. Vista Avenue  
 Addison, IL 60101-4423  
 U.S.A.  
 Tel: +1 630-458-0008  
 Fax: +1 630-458-0730  
 info@aimmachines.com

AIM Europe S.A.  
 68th Km N. Rd Athens-Lamia  
 Paleohori, P.O. Box 36  
 32 009, Greece  
 Tel: +30 22620.58900  
 Fax: +30 22620.59231  
 info@AIMEuropeSA.com

WWW.AIMMACHINES.COM

